

Brake caliper, front, repairing (100/A6 models)

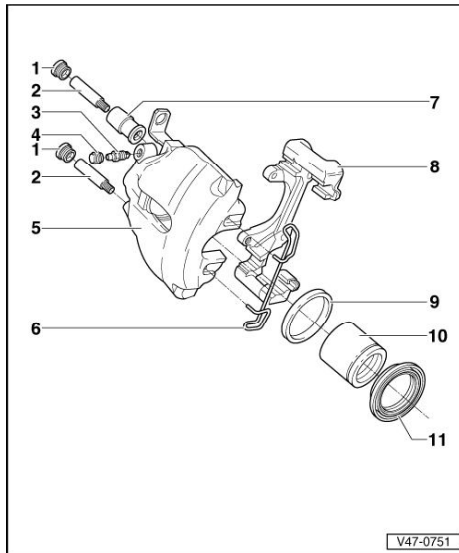
Brake caliper, front, repairing (100/A6 models)

CAUTION!
When repairing,
use all the parts in
the repair kit.

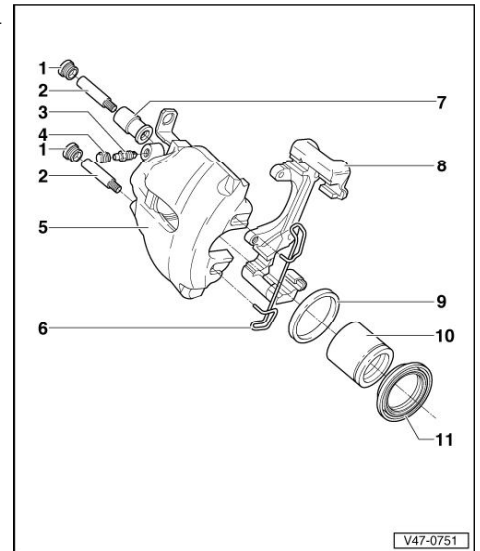
Note:

Coat the cylinder,
piston and piston lightly
with brake assembly
lube.

1. Guide pin cap
◆ Install in
rubber
bushing
2. Guide pin
◆ 25 Nm
(18 ft lb)
3. Bleeder valve
◆ Before
installing,
lightly
coat
threads
with brake
assembly
lube
4. Protective cap
◆ Install on
bleeder
valve
5. Brake caliper
housing
6. Retaining
spring
◆ Install
with both
ends in
holes of
brake
caliper
housing
7. Rubber
bushing
◆ Install in
brake
caliper
housing
8. Brake pad
carrier
9. Piston seal
◆ Remove



with
screwdriver
Fig. 2



10. Piston

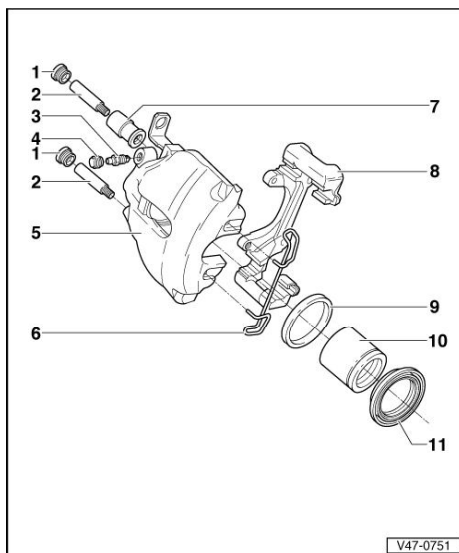
- ◆ Force out
of brake
caliper
housing
with
compressed
air Fig. 1

WARNING!

- ◆ Risk of
accident!
Apply pressure
gradually.
Guard against
sudden release
of the piston.
- ◆ Place wooden
board into the
recess of the
caliper
housing to
catch the

pistons so that
they are not
damaged Fig.
1.

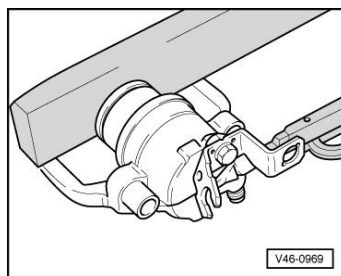
1.
 - ◆ Installing
Fig. 3, Fig.
4 and Fig.
5
 - ◆ Coat
piston
lightly with
brake
assembly
lube
 - ◆ Diameter:
57 mm
(2.24
inches)
11. Piston outer
seal
◆ When
installing,
do not
damage
piston



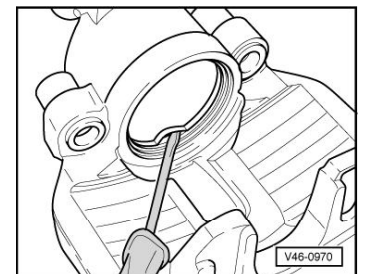
→ Fig. 1 Pressing piston out of cylinder
with compressed air

WARNING!

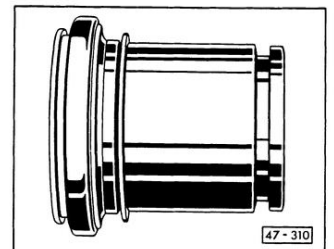
- ◆ Risk of accident! Apply pressure
gradually. Guard against sudden
release of the piston.
- ◆ Place wooden board into the
recess of the caliper housing to
catch the pistons so that they are
not damaged.



→ Fig. 2 Removing piston seal



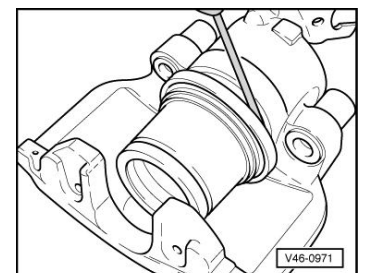
→ Fig. 3 Installing protective cap with
outer seal on piston



→ Fig. 4 Installing piston outer seal lip
into cylinder groove

Note:

Hold the piston in front of the cylinder.



→ Fig. 5 Installing piston

CAUTION!
Lip of outer seal must spring into groove on piston.

