

UPDATE INSTRUCTIONS FOR MMI 3GP

Version 1.5 (rev 1) Jan 2016

| | |
|--|-----------|
| UPDATE INSTRUCTIONS FOR MMI 3GP | 1 |
| BEFORE START | 2 |
| WHAT YOU NEED | 2 |
| UPDATING FIRMWARE | 3 |
| UPDATING THE MAP | 7 |
| ACTIVATING THE MAP | 15 |
| MISC | 18 |
| ENABLE GREEN MENU (HIDDEN MENU) | 18 |
| ENABLING GREEN MENU WITH VCDS | 18 |
| ENABLING GREEN MENU USING A SCRIPT | 20 |
| EMERGENCY UPDATE (AND OPTIONAL REGION CHANGE) | 22 |
| REMOVE VIN NUMBER IN MMI MENU | 26 |
| REMOVE ERROR "03276 PLEASE CHECK SOFTWARE VERSION MANAGEMENT" | 28 |
| USER DEFINED UPDATE | 32 |
| THANKS | 34 |

BEFORE START



Caution: Use this guide at your own risk, we are not responsible



Important: Connect your car with a battery charger or leave the engine running



Important: Some users report problems when copying files from Mac OS / Linux, It's better if you use Windows for all file copy process. You can use a virtual machine for that.



We recommend: Backup your old FSC using "FSC Backup" script.



We recommend: Read the complete guide before the start, recheck all the steps and do it carefully.

THIS MEANS A PHYSICAL BUTTON > A button that you can touch with your hands

THIS IS A GREEN MENU ITEM > It indicates the path in the hidden menu

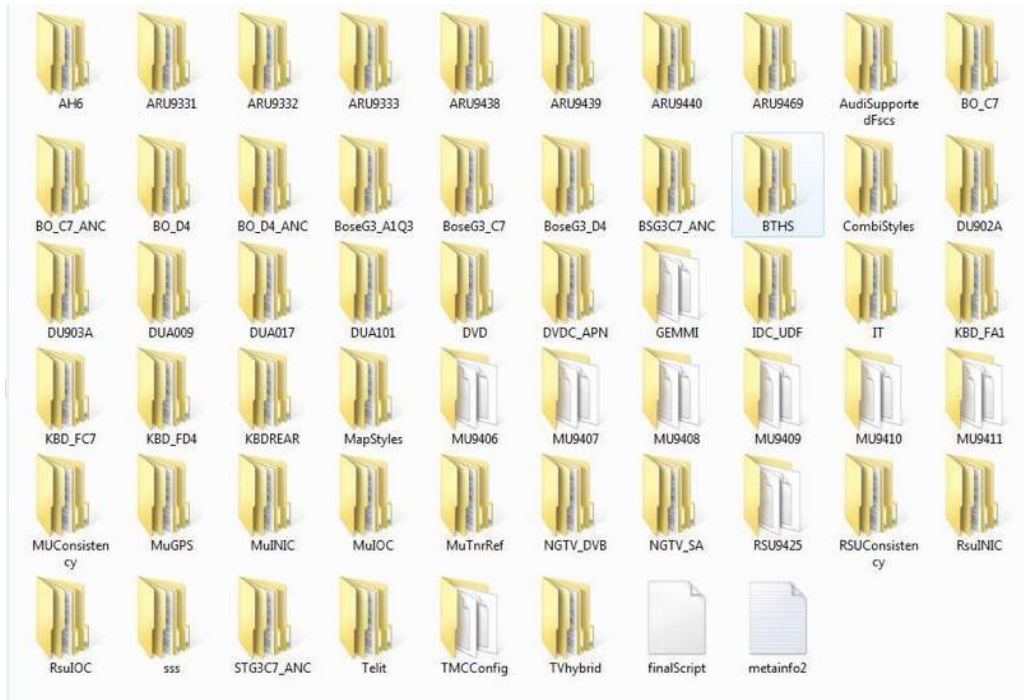
WHAT YOU NEED

- Firmware files
- Map files
- Activation script
- A quality SD, Class 10 for faster (and safer) file operations.
- (Optional) VagCom cable or similar

UPDATING FIRMWARE

Format your SD in FAT32.

Copy the root of your firmware in the SD (like picture below)

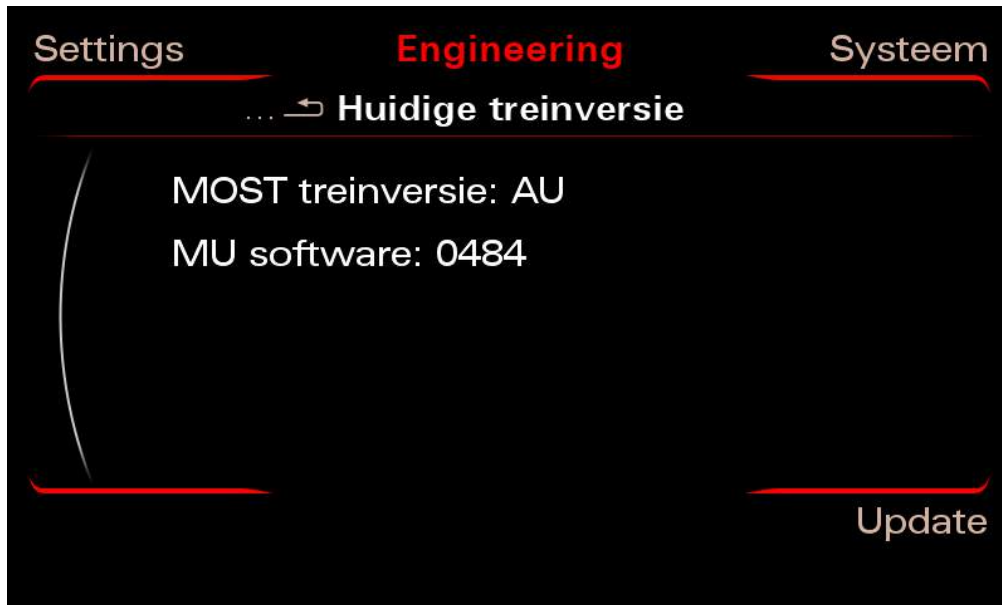


Open "Engineering Menu" pressing the **CAR** button and immediately after that the **BACK** button

Hold both buttons pressed for a few seconds



This screen will appear

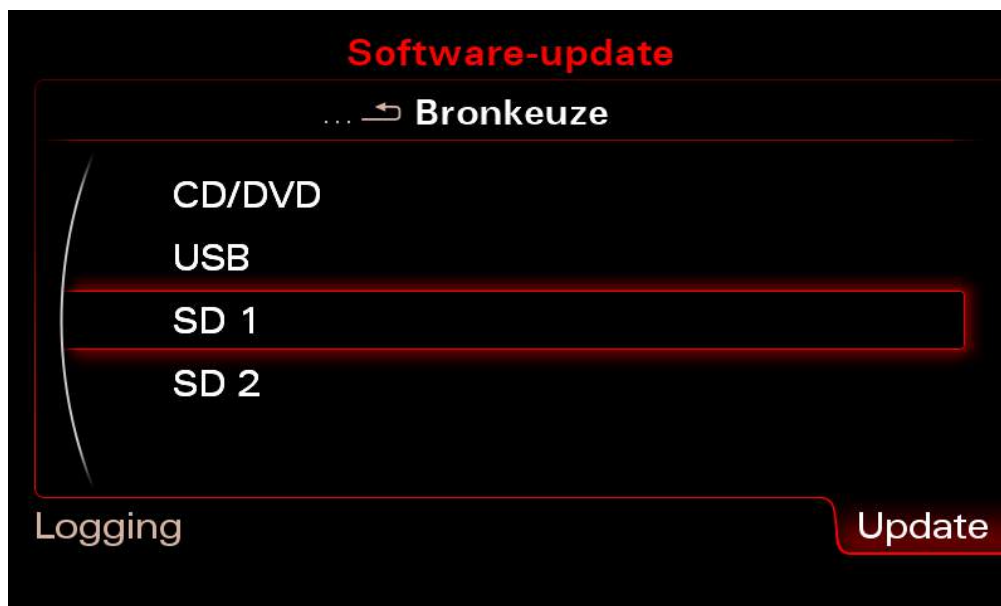


Insert the SD card with the firmware in slot 1

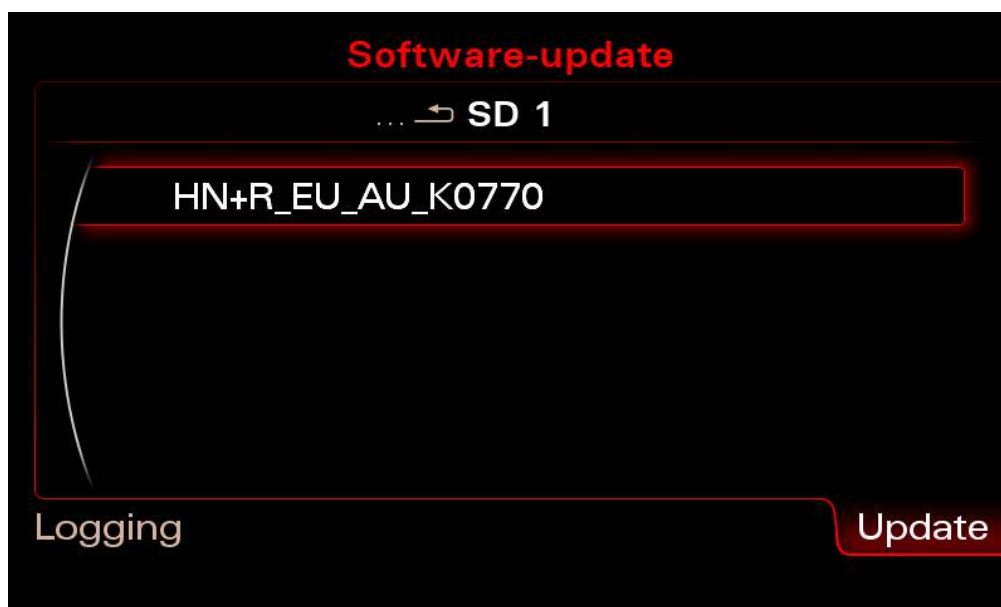
Press the "Update" option using the MMI Control Panel



Scroll down with the big knob and select the source in the menu (SD 1) pressing it.



Select the firmware pressing the big knob once



Select "Standard"



Caution: Some users report problems with Bose sound system, if you have Bose and don't know how to recode it... we recommend that you unselect it from list (using User-Defined Mode) before update.



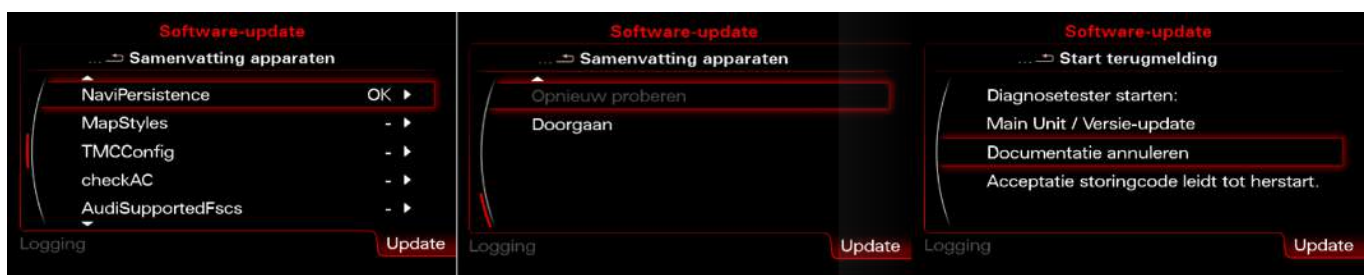
You will see a list with all categories that firmware will update

Scroll to bottom and press "Start Update"



After several minutes/hours (it depends that what it has to update and the speed of your SD) the firmware update will be done

Select the "Abort documentation" and the MMI will reboot



UPDATING THE MAP

Optional: Removing the old map is optional. However, is highly recommendable.



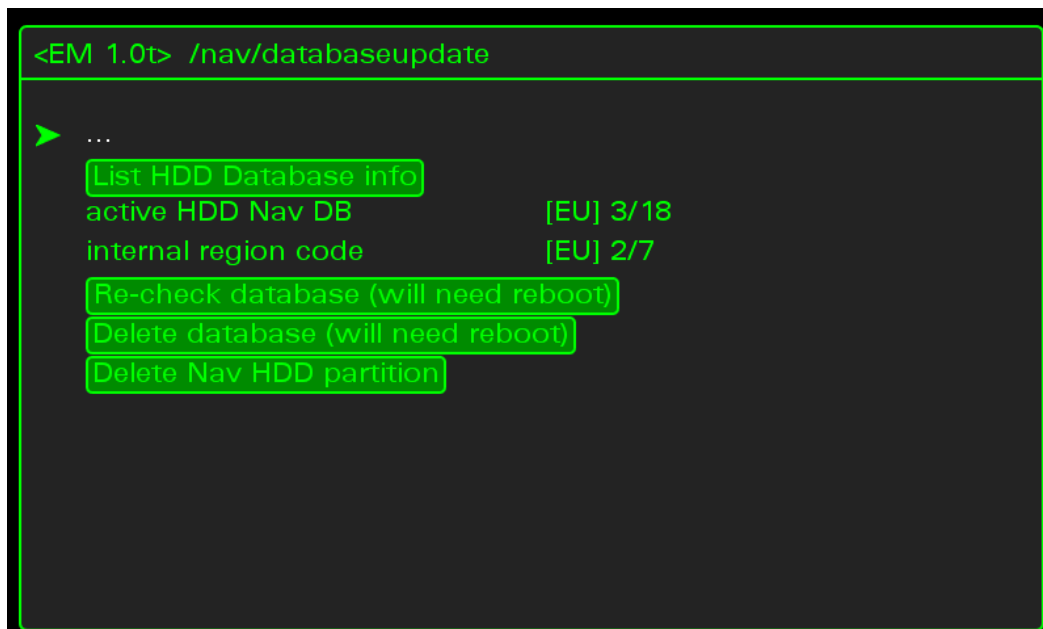
Benefits are:

- Avoid the not removable **Fault Code 03175 - Invalid Data Set** error
- Avoid errors while copying the map (out of size, slow write speed)
- There are no files of the old map into the new map

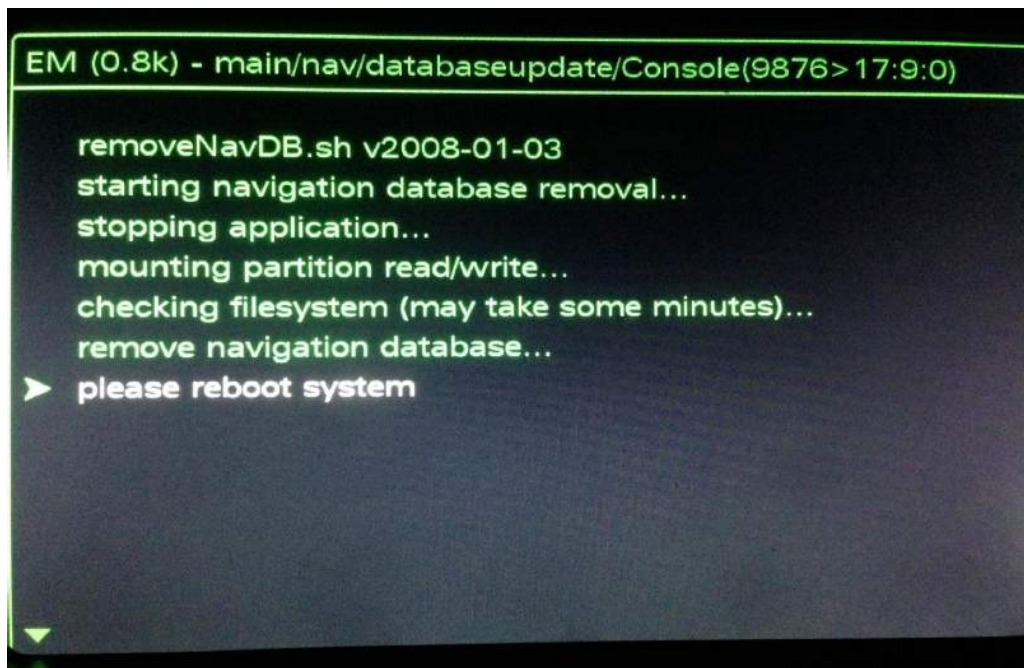
Open Green Menu (Press **CAR** and **MENU** and hold it)

Go to **nav/databaseupdate**

Select "**Delete database (will need reboot)**" and click it.



Wait until system removes the data.



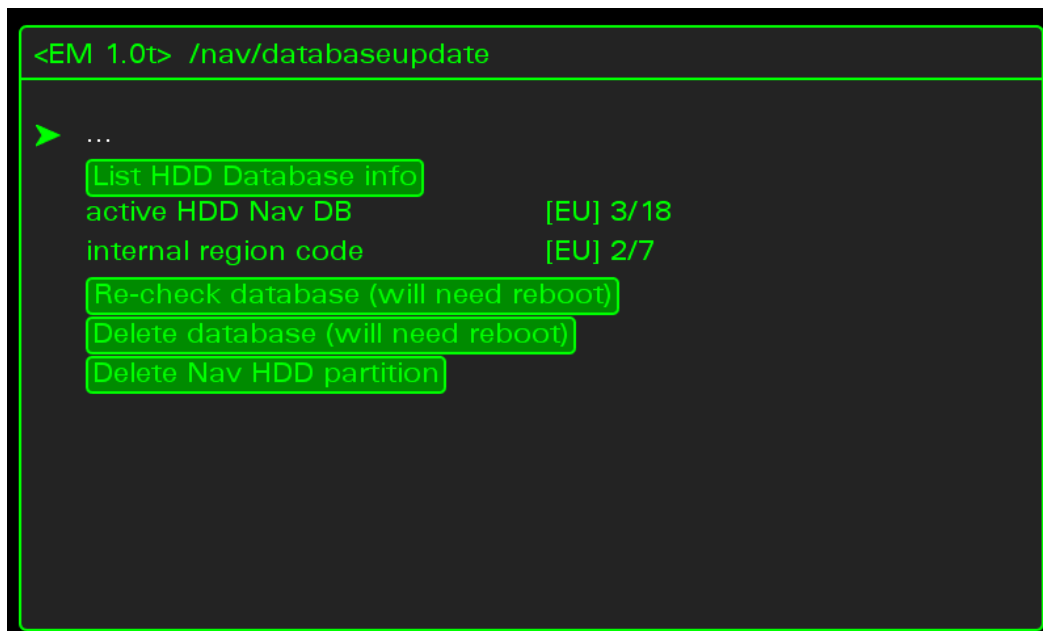
When it finished. Reboot your MMI using the 3 button



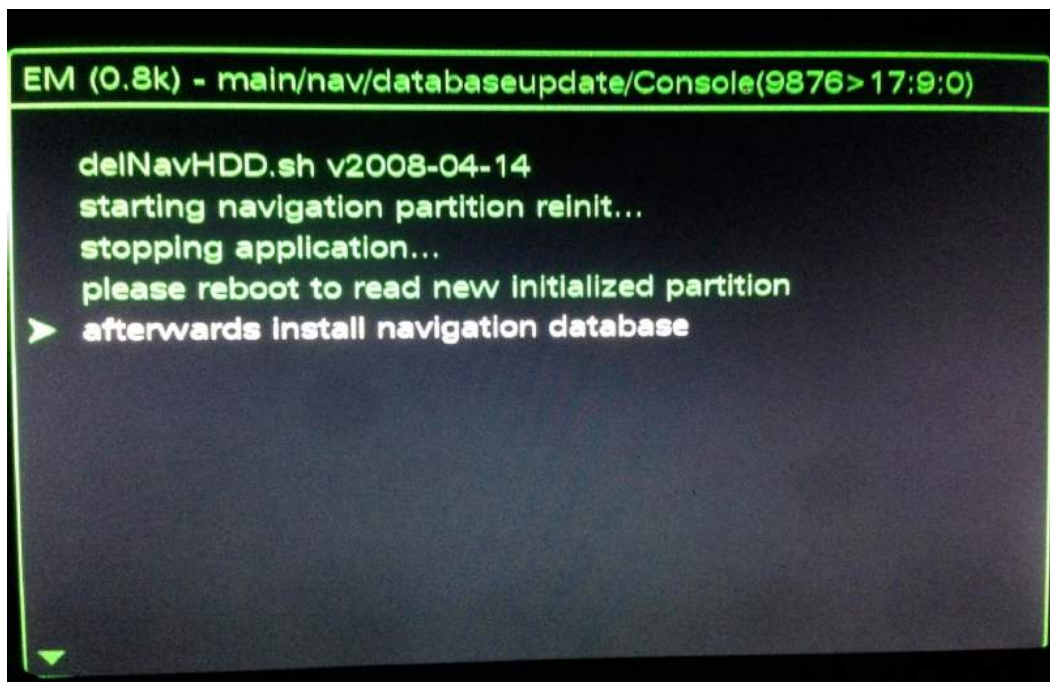
Open Green Menu again (Press **CAR** and **MENU** and hold it)

Go to **nav/date**

Select "**Delete Nav HDD partition**" and click it.



Wait until system removes the data.

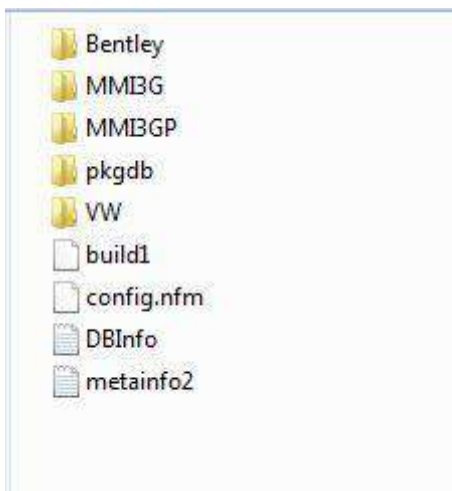


When it finished. Reboot your MMI using the 3 button



Format your SD in FAT32.

Copy the root of your map in the SD (like picture below)

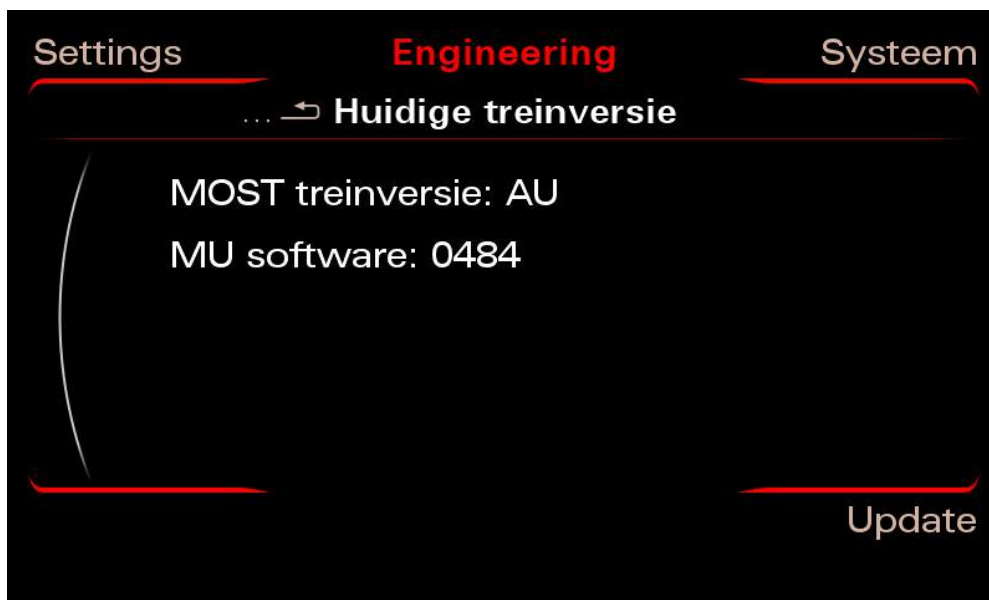


Open "Engineering Menu" pressing the **CAR** button and immediately after that the **BACK** button.

Hold both buttons pressed for roughly some seconds.



This screen will appear

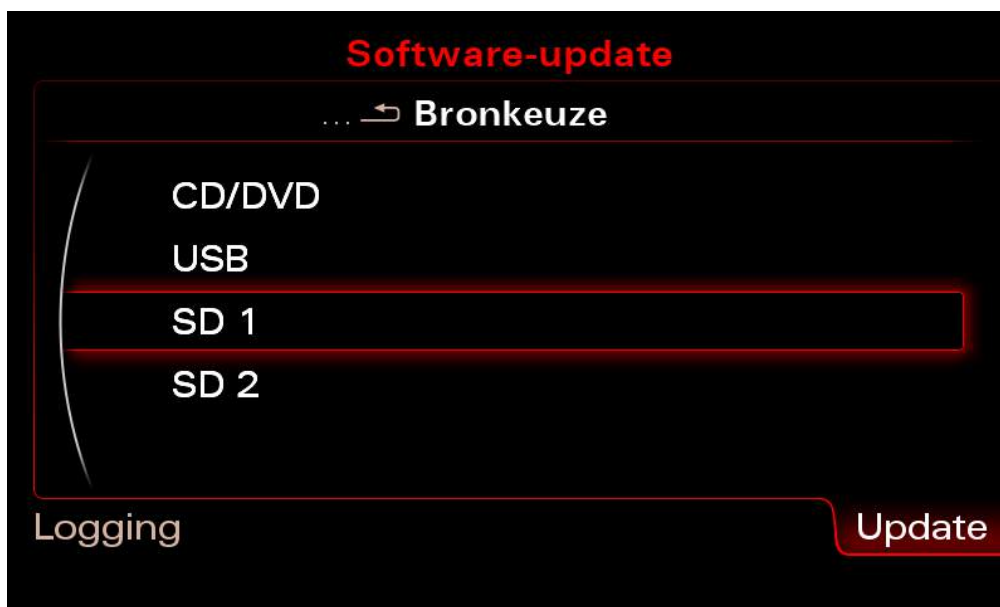


Insert the SD card with the firmware in slot 1

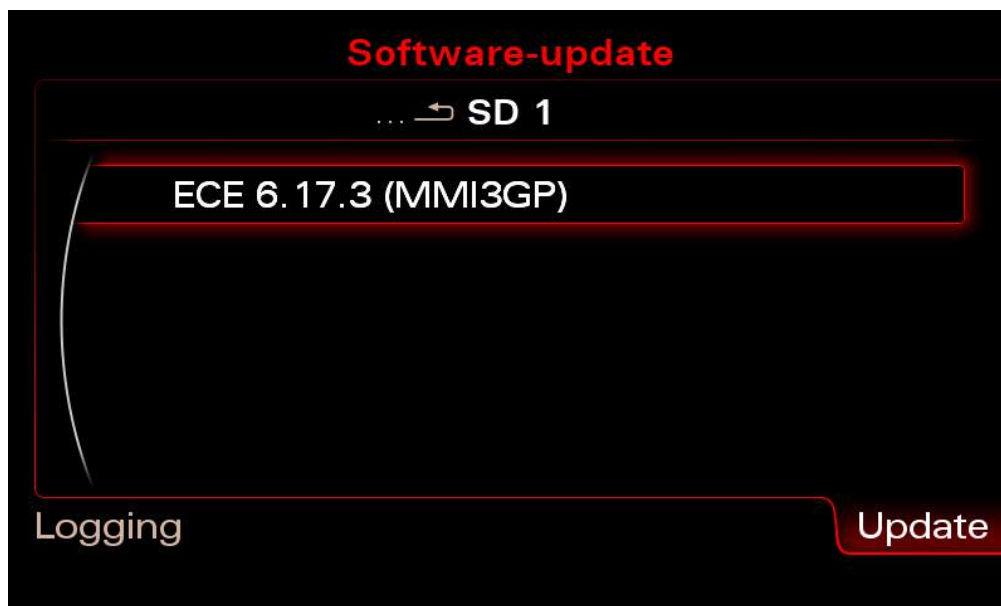
Press the "Update" option using the MMI Control Panel



Scroll down with the big knob and select the source in the menu (SD 1) pressing it.



Select the map pressing the big knob once



Select "Standard"



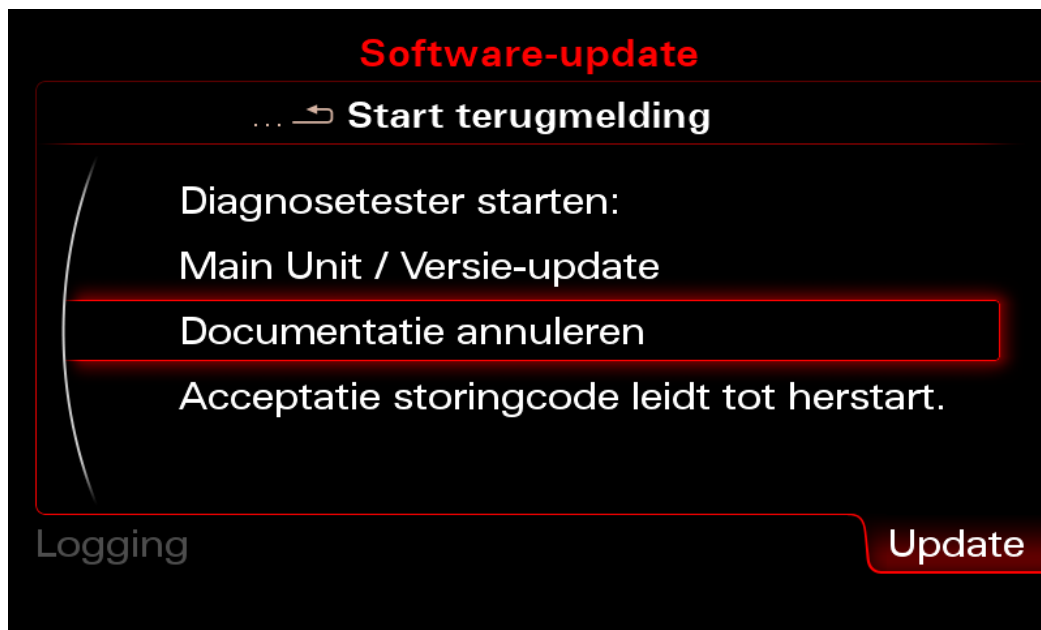
You will see a list with all categories that map will update

Scroll to bottom and press "Start Update"





After several minutes (even hours... it depends that the speed of your SD) the map update will be done, just select the "Documentation Cancel/Abort Information" and the MMI will reboot.



ACTIVATING THE MAP



Caution: Do **NOT** insert the SD until MMI has fully booted you can brick your unit!



Caution: Please **double check** that you're using the correct activator for your firmware, using incorrect activator will result in a bricked (dead) MMI unit



Caution: If you already have an activator installed (like Carson's Patch) **DON'T apply another activator.** You'll need to "clean" your firmware before doing an emergency update or just inject the FSC using "FSC injector". Multiple activators will lead to a bricked (dead) MMI unit

Format your SD in FAT32.

Copy the root of your activation in the SD (like picture below)

| | | | |
|-------------|-------------------|-------------|------|
| app | 2/13/2014 8:49 AM | Bestandsmap | |
| FSC | 2/28/2014 7:29 PM | Bestandsmap | |
| screens | 2/28/2014 7:37 PM | Bestandsmap | |
| utils | 2/13/2014 8:49 AM | Bestandsmap | |
| copie_scr | 2/1/2013 3:04 PM | SH-bestand | 1 kB |
| run | 4/3/2014 10:26 PM | SH-bestand | 2 kB |
| startDumper | 2/6/2014 11:46 AM | SH-bestand | 1 kB |

Make sure that MMI is fully booted (press all buttons once **RADIO CAR NAV MEDIA TEL**).

Wait until all options are ok (no options in gray) even when all options are ok wait a minute more.

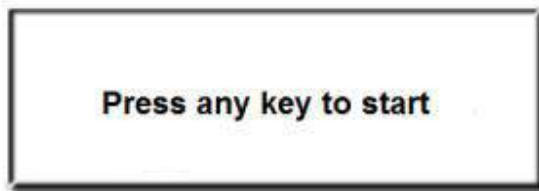
Is the moment for insert the SD in slot 1.

Don't touch anything

After a few seconds a screen will pop up, press any key (we suggest the big knob) **once**

MMI 3GP K770 Patch By Carson

MMI 3GP K770 Patch By Carson



MMI 3GP K770 Patch By Carson

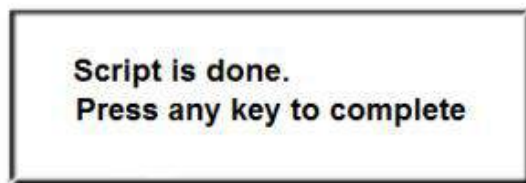
MMI 3GP K770 Patch By Carson

Don't touch anything again (the script are copying files and doing stuff)

After some seconds/minutes the script will finish and another screen will appear.

MMI 3GP K770 Patch By Carson

MMI 3GP K770 Patch By Carson



MMI 3GP K770 Patch By Carson

MMI 3GP K770 Patch By Carson

Remove the SD before doing anything

Reboot your MMI using the 3 button



Enjoy your fully activated map!

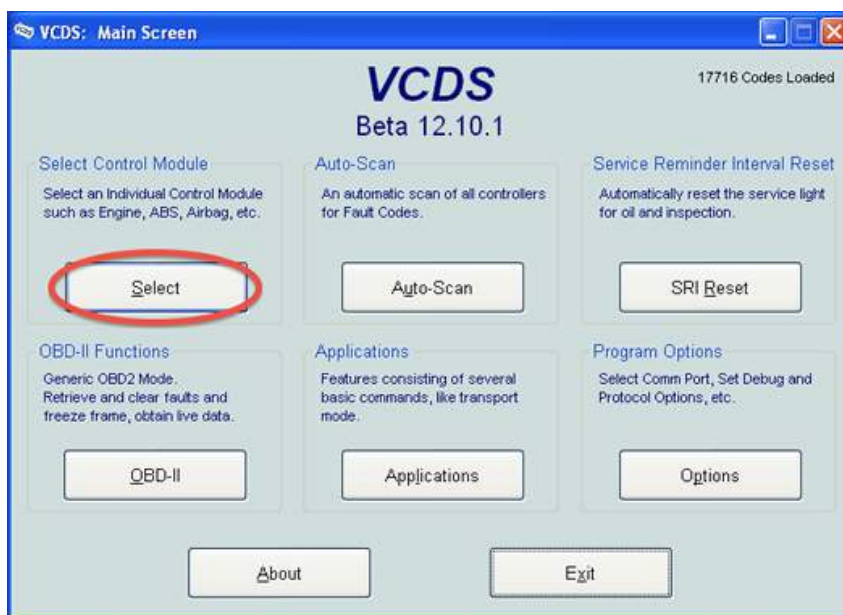
MISC

ENABLE GREEN MENU (HIDDEN MENU)

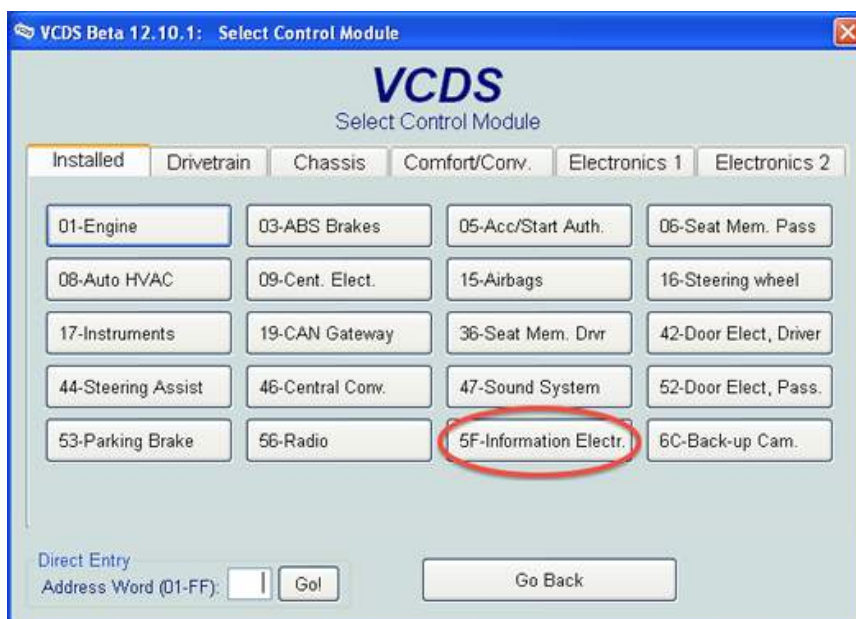
Green Menu is used for several operations. For activate it you can do it with a VagCom cable (VCDS) or using a script.

ENABLING GREEN MENU WITH VCDS

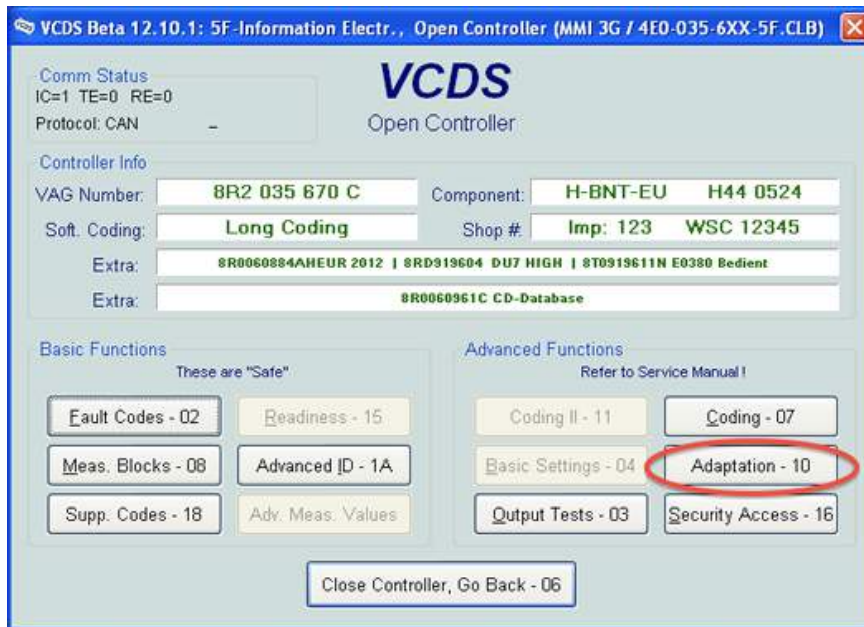
Open VCDS and inside "Select Control Module" click on "**Select**" button



Select module "**5F**"

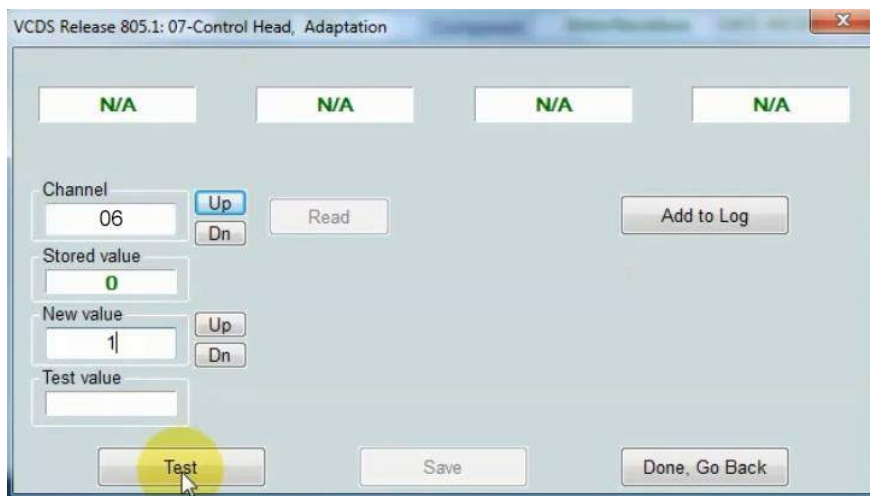


Click on **"Adaption - 10"**



Enter **"6"** for the channel and press the **"Read"** button

Now inside the **"New Value"** field set the value to **"1"** and click **"Test"** and **"Save"**



Note that only **"Save"** may be available in which case you would ignore the **"Test"** button

Press **"Done, Go Back"**, close the controller and quit the software

There's no need to restart the MMI, just press **CAR** + **SETUP** for 6 seconds to enter the hidden menu

ENABLING GREEN MENU USING A SCRIPT

Download the “Green Menu” script

Format your SD in FAT32 and copy the script’s files in the SD root (like picture below).



Make sure that MMI is fully booted (press all buttons once **RADIO CAR NAV MEDIA TEL**).

Wait until all options are ok (no options in gray) even when all options are ok wait a minute more.

Is the moment for insert the SD in slot 1.

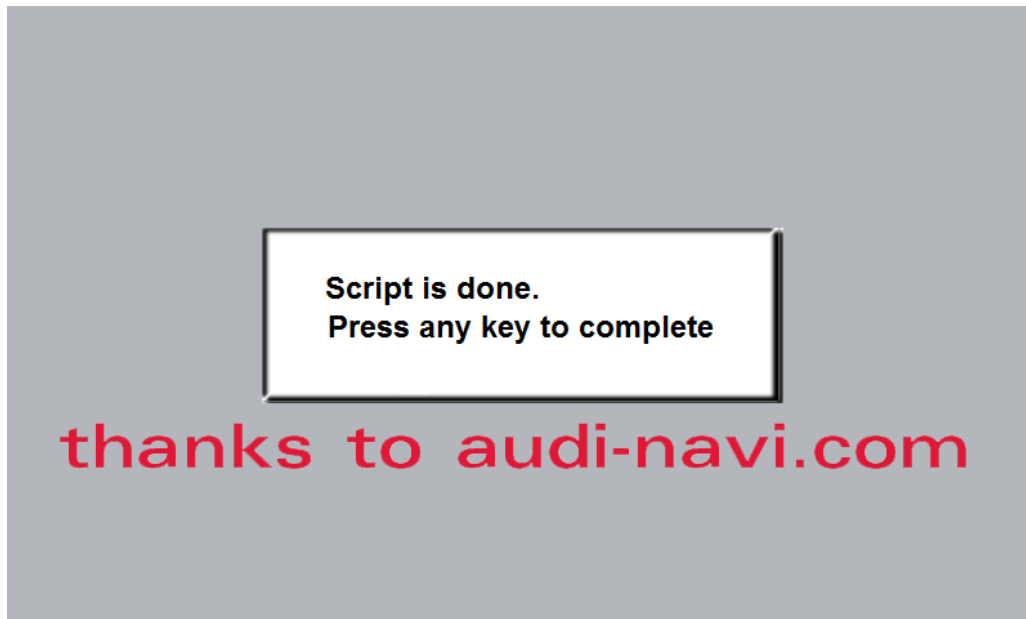
Don't touch anything

After a few seconds a screen will pop up, press any key (we suggest the big knob) **once**



Don't touch anything again (the script are copying files and doing stuff)

After some seconds/minutes the script will finish and another screen will appear.



Remove the SD before doing anything

Reboot your MMI using the 3 button



Now you can access to "**Green Menu**"

EMERGENCY UPDATE (AND OPTIONAL REGION CHANGE)

Emergency update is useful if you have an activator installed (like Carson's patch) and you want to update your firmware or install another patch without problems.



We recommend: Do the emergency update with the same firmware that are currently installed.

Open Green Menu (Press **CAR** and **MENU** and hold it)



Important: This step are only required if you need to change the region of your car (e.g. USA->Europe)

Go to **system/internal**

Change "**internal region code**" to "**Rest of the world**" and press return



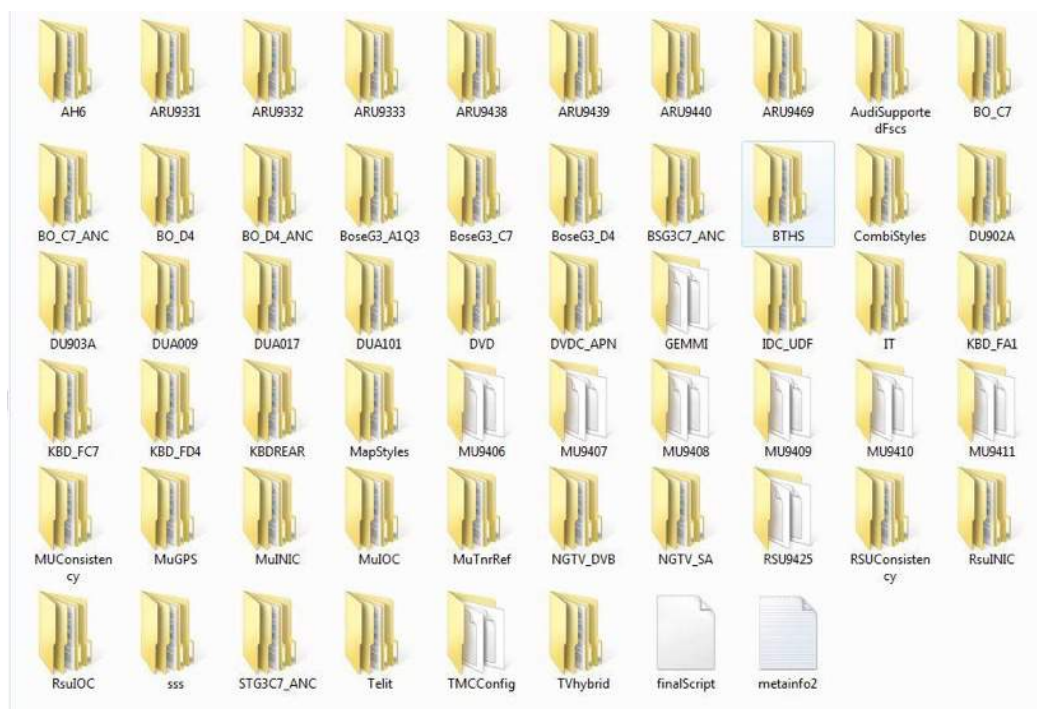
Important: This step are only required if you need to change the region of your car (USA->Europe e.g.)

Go to **swdl** and tick "**ignore region and variant**"



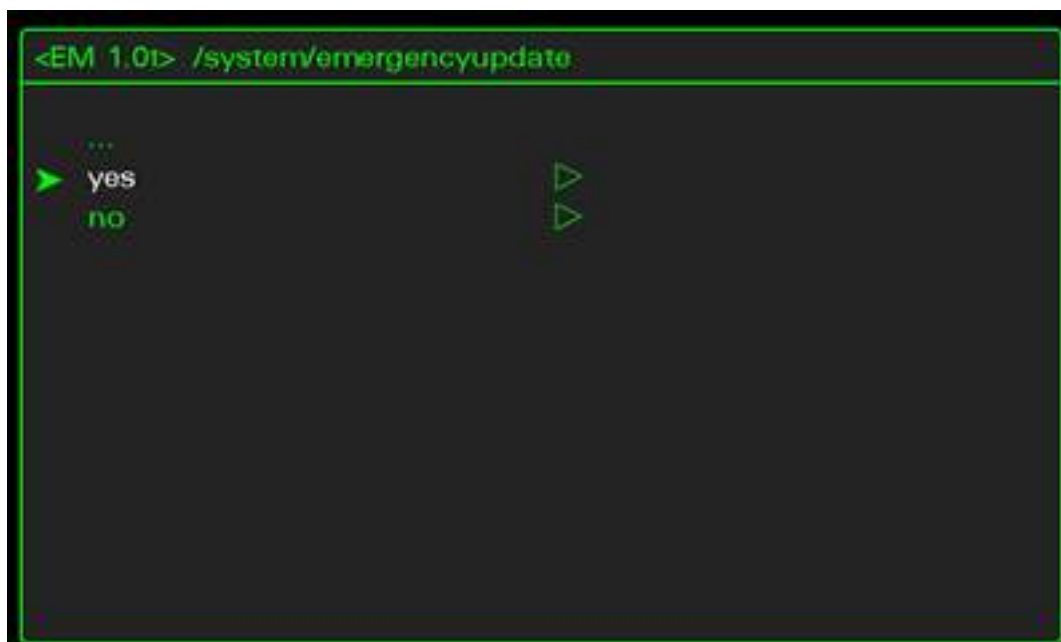
Format your SD in FAT32.

Copy the root of your firmware in the SD (like picture below)



Insert your new firmware update into the MMI unit slot SD1

Go to **system** and press **"emergency update"**, and then click **"Yes"**



MMI will now reboot and enter into “Emergency Update” mode.



Important: The deletion and programming processes are performed several times, until all components of the MMI have been updated. Wait until the programming process is finished and the system automatically restarts. **Your input is not necessary.** The flash tool will begin deleting all the existing flash information in this step.



Once the above step is completed the programming screen will appear



Important: No input is necessary from you, the update tool will perform everything automatically.



Some users reported that "EmergencyUpdate" only install a few (basic) functions on your MMI, while other functions (like Google Maps) are not installed.

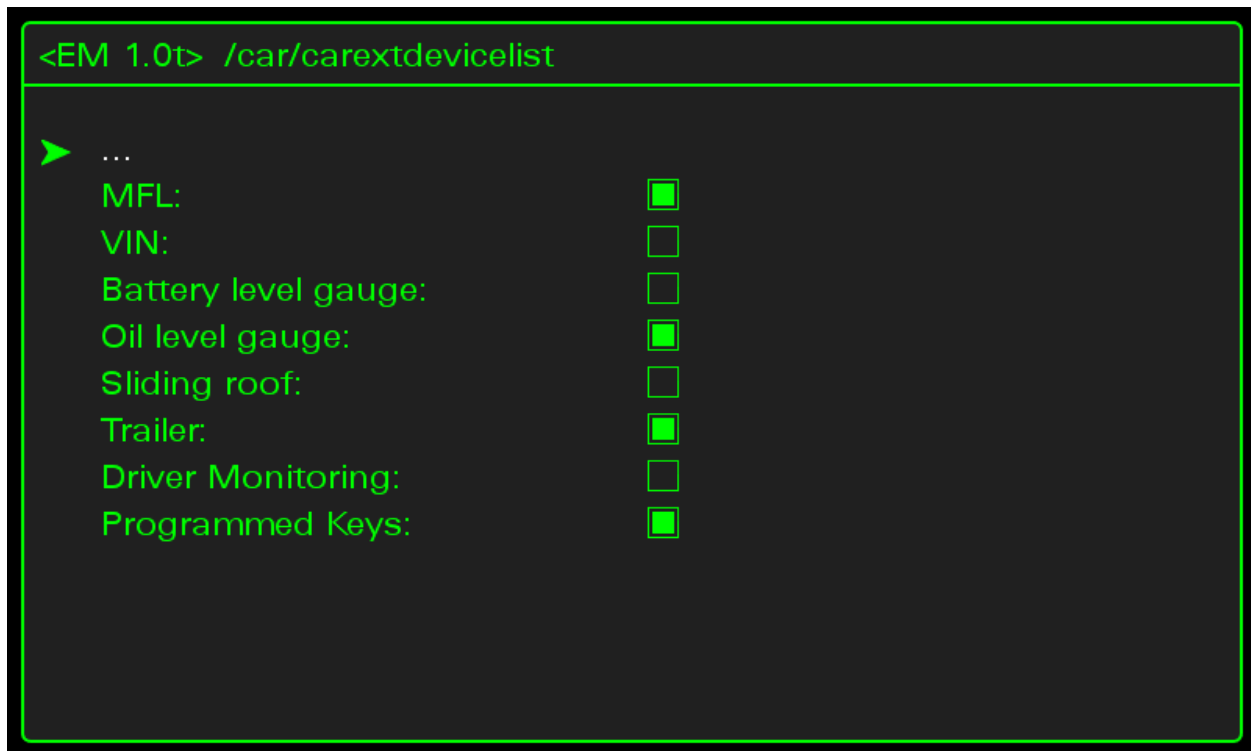
Once the MMI emergency update is completed, you will need to re-install your firmware as normal using the procedure showed in this manual for install all "secondary" functions.

REMOVE VIN NUMBER IN MMI MENU

Open Green Menu (Press **CAR** and **MENU** and hold it)

Go to `car/carextdevicelist`

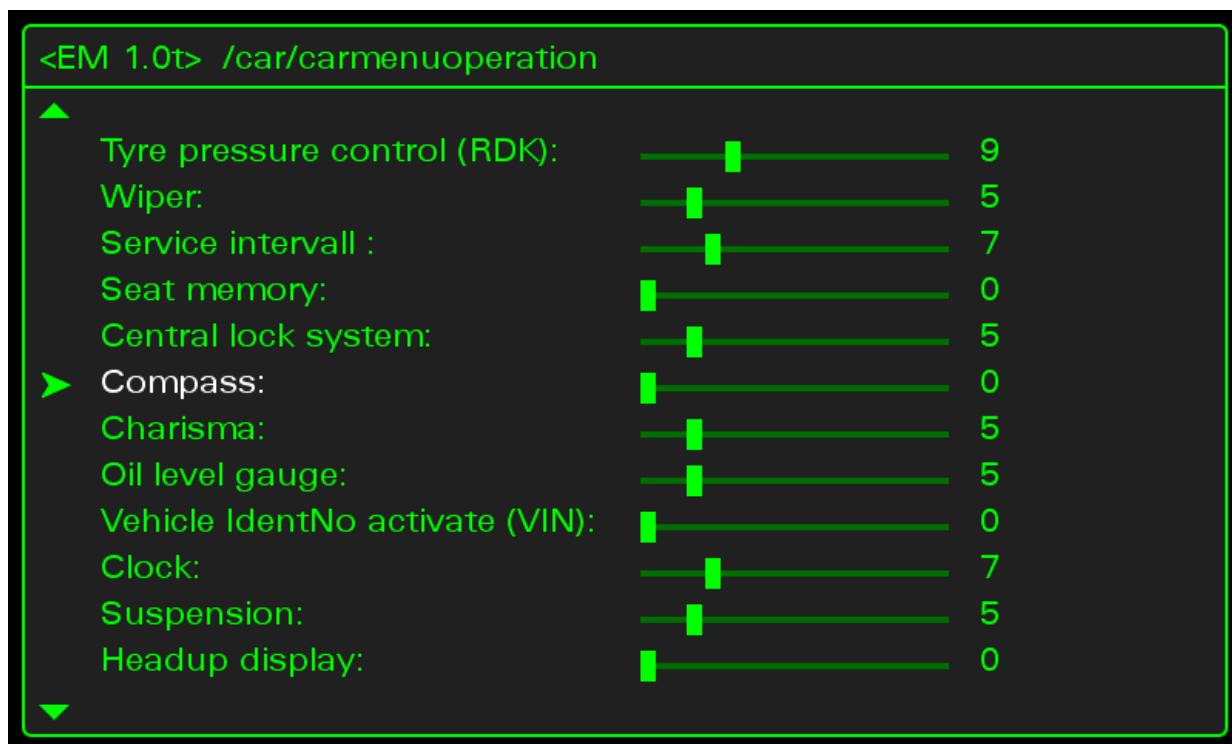
Uncheck **"VIN"**



Go back (click in `...`)

Go to `car/carmenuoperation`

Scroll down to VIN and set VIN value to **"0"**



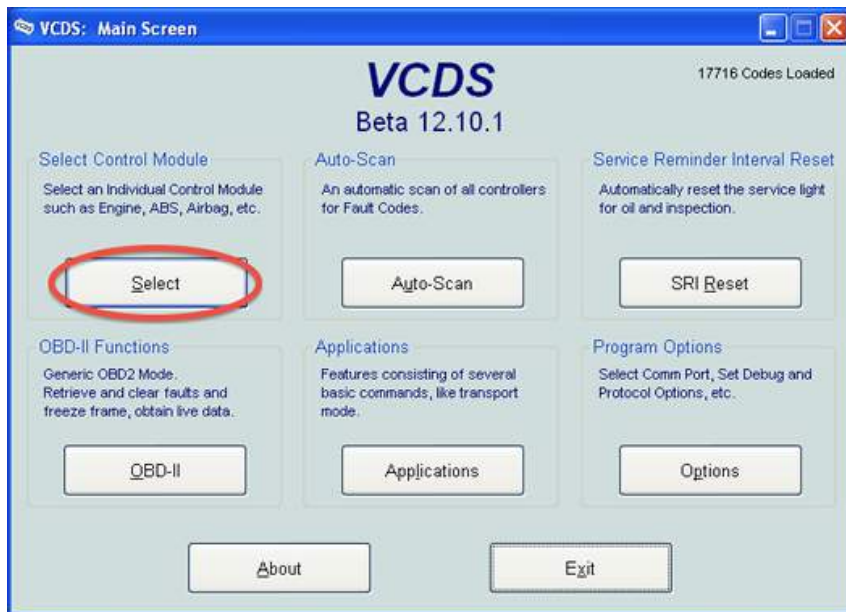
Exit from Green Menu with the **CAR** button.

Reboot your MMI using the 3 button

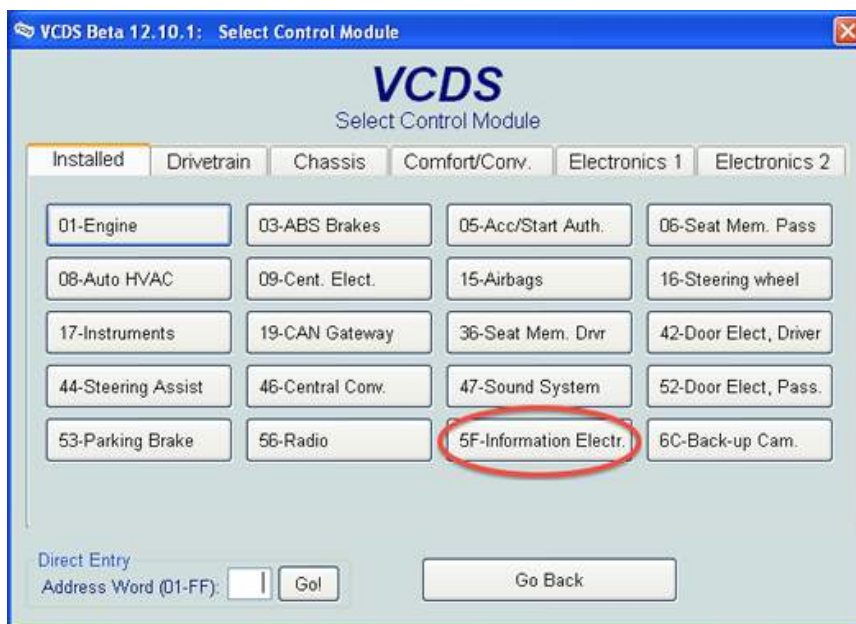


REMOVE ERROR “03276 PLEASE CHECK SOFTWARE VERSION MANAGEMENT”

Open VCDS and inside “Select Control Module” click on “**Select**” button



Select module “**5F**”



Click on “**Adaption – 10**”

VCDS Beta 12.10.1: 5F-Information Electr., Open Controller (MMI 3G / 4E0-035-6XX-5F.CLB)

Comm Status
IC=1 TE=0 RE=0
Protocol: CAN -

Controller Info
VAG Number: 8R2 035 670 C Component: H-BNT-EU H44 0524
Soft. Coding: Long Coding Shop #: Imp: 123 WSC 12345
Extra: 8R060884AHEUR 2012 | 8RD919604 DU7 HIGH | 8T0919611N E0380 Bedient
Extra: 8R060961C CD-Database

Basic Functions
These are "Safe"
Fault Codes - 02 Readiness - 15
Meas. Blocks - 08 Advanced ID - 1A
Supp. Codes - 18 Adv. Meas. Values

Advanced Functions
Refer to Service Manual!
Coding II - 11 Coding - 07
Basic Settings - 04 Adaptation - 10
Output Tests - 03 Security Access - 16
Close Controller, Go Back - 06

Enter "15" for the channel and press the "Read" button

VCDS Beta 12.10.1: 5F-Information Electr., Adaptation

Documented adaptation channels can be selected here

24069 N/A N/A N/A
Count

Channel: 15 Up Down Read Add to Log
Stored value: 0
New value: 1 Up Down
Test value:

Test Save Done, Go Back

Copy the number in "Count" field

VCDS Beta 12.10.1: 5F-Information Electr., Adaptation

Documented adaptation channels can be selected here

24069 N/A N/A N/A
Count

Channel: 15 Up Down Read Add to Log
Stored value: 0
New value: 1 Up Down
Test value:

Test Save Done, Go Back

Using a scientific calculator make the next formula:

YourCountNumber ^ **51666**

Or

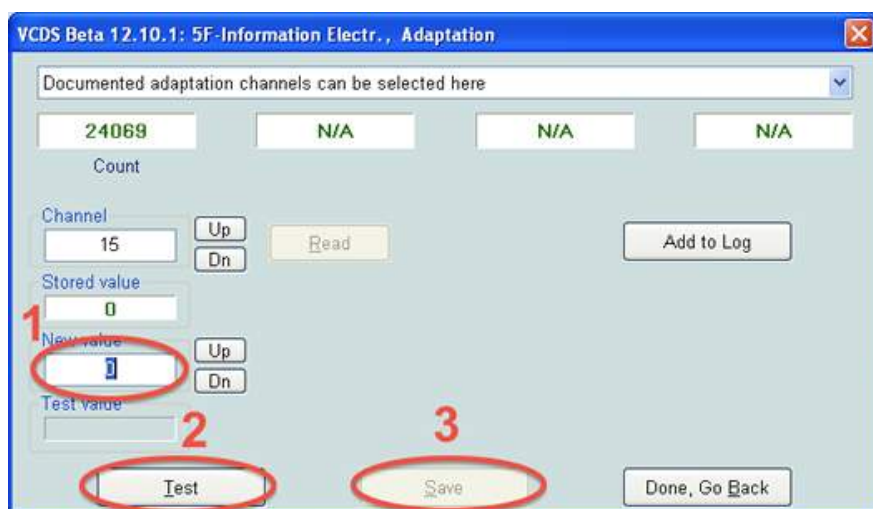
YourCountNumber XOR **51666**

You can also use the calculator in

http://www.audienthusiasts.com/Application_SVMEError.html

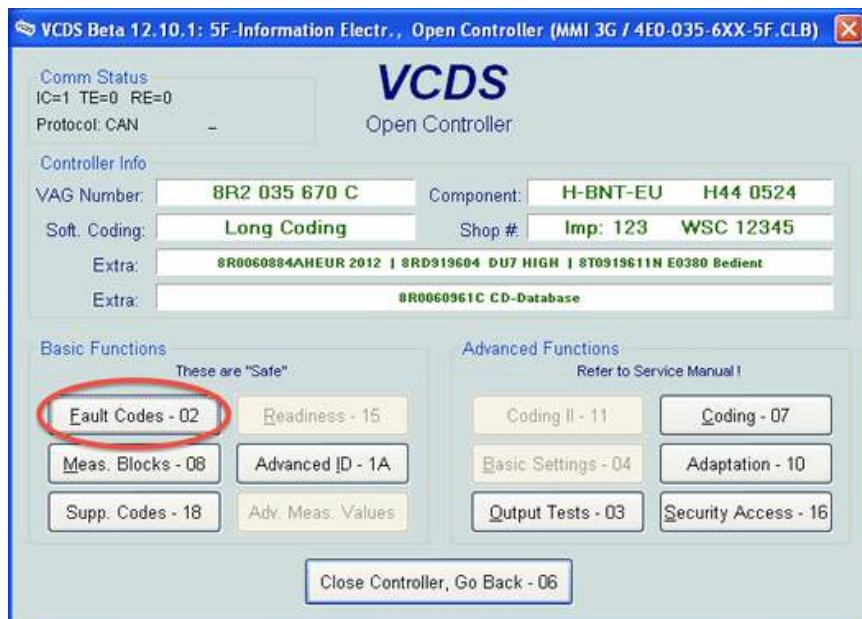
Now enter the result into the **"New Value"** field and click **"Test"** and **"Save"**

Note that only **"Save"** may be available in which case you would ignore the **"Test"** button

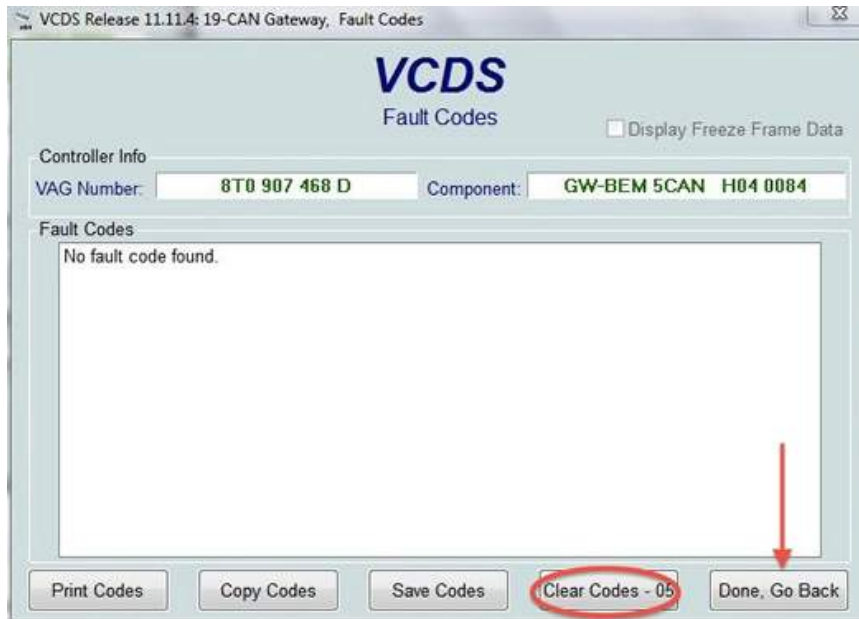


Exit Adaptations and return to the main screen (Click **"Done, Go Back"**)

Click **"Fault Codes - 02"**



If you see any Faults click **"Clear Codes – 05"** then **"Done, Go Back"**



Now check Fault Codes one more time and the SVM error should be gone. If not, repeat the steps again.

In the event you go to Channel 15 and there is no Count value, clear your errors and then go back recheck. Sometimes the count will not be present until the error is cleared. Of course the error will return until you complete all the above steps again.

USER DEFINED UPDATE

Sometimes things go wrong and maybe the update is not completed. When this happen you can use the "User Defined" mode for make a manual selection of what upgrade or install.

This is also useful for some Bose audio users that want to update all functions in MMI except Bose modules (Bose updating sometimes will trigger "component protection" and you will need to recode the unit).

For enable this mode:

Open Green Menu (Press **CAR** and **MENU** and hold it)

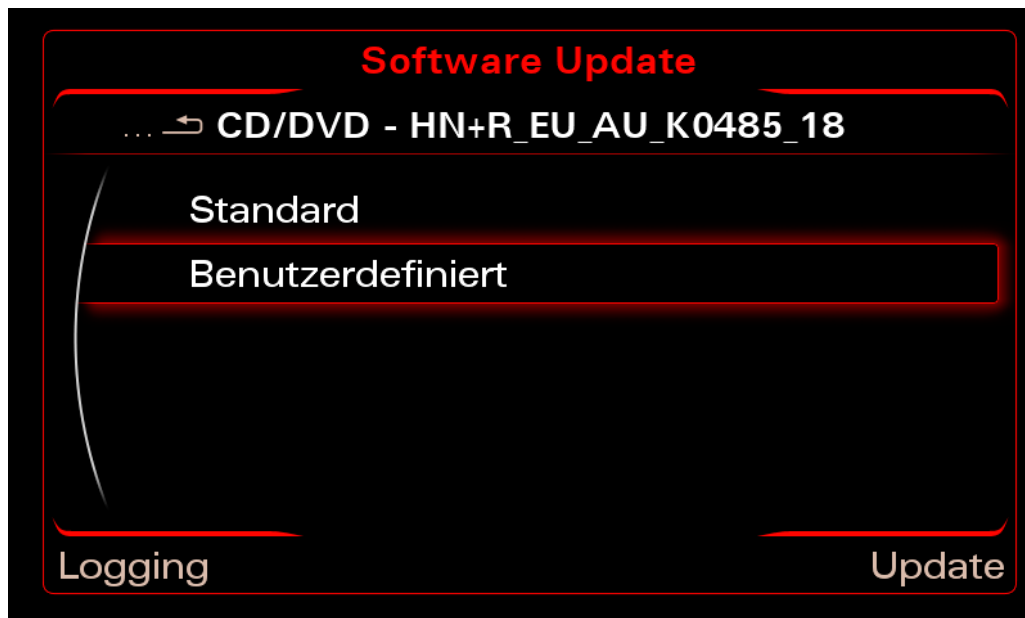
Go to **swdl** and tick "**user defined mode**"



Don't reboot, just exit with any button (I usually use **RADIO**)

Proceed with firmware-upgrade as normal.

When the update starts, you can select "User Defined" instead of "Standard"



And now you can select every module manually.



THANKS

This manual was originally created by Carpediem and updated/extended by darkdll

Thanks to all the people involved in the Audi scene

Thanks to Carson for his super patch.

Thanks to people that share their maps and FSCs

Especial thanks to Iridium, Walawa75, AudiEnthusiasts, Cartechtechnology forum...

And thank you for read this :)